

**Polska**



Economy

2015-03-28 22:28:18



Entrepreneurs conducting business in the Lubuskie voivodeship can receive funding for one project from a few sources simultaneously, combining aid, for example, available within the EU Structural Funds, the Government Programmes and in case of locating the investment in a Special Economic Zone (SEZ) the CIT or PIT exemption.

Within the Operational Programmes 2014-2020, entrepreneurs will be able to apply for the state aid designed for: research and development, innovations, investments connected with the environment protection, industrial property protection, stimulating cooperation between science and business and training.

A contact person in the Lubuskie Voivodeship Marshall Office for the available EU programs and resources:

EU Funds Main Information Point in Zielona Góra

www: <http://www.fundusze.lubuskie.pl/Kontakt>

e-mail: [infoue@lubuskie.pl](mailto:infoue@lubuskie.pl); [e.hajlasz@lubuskie.pl](mailto:e.hajlasz@lubuskie.pl)

Ewelina Hajłasz

Coordinator (Manager)

tel.: 68 4565 227

e-mail: [e.hajlasz@lubuskie.pl](mailto:e.hajlasz@lubuskie.pl)

Contact persons in the Regional Development Agency (ARR SA) in Zielona Góra for the available EU programmes and resources:

Consulting Point in ARR SA

Krzysztof Jurek

tel. +48 68 329 78 27

email: [k.jurek@region.zgora.pl](mailto:k.jurek@region.zgora.pl)

<http://www.region.zgora.pl/>

Marta Rosiak

tel. +48 68 329 78 43

email: [m.rosiak@region.zgora.pl](mailto:m.rosiak@region.zgora.pl)

<http://www.region.zgora.pl/>

e-mail: [babij@kssse.pl](mailto:babij@kssse.pl)

In the Lubuskie voivodeship, two special zones are operating: the Kostrzyn-Słubice Special Economic Zone and the subzone of the Wałbrzych Special Economic Zone "INVEST-PARK". In these areas, entrepreneurs can take advantage of preferential terms while running business. Companies acting within the zones receive tax abatements. A company can start its business activity on a specially prepared territory and conduct it without paying income tax (CIT or PIT, depending on the legal form of conducting business).

The Kostrzyn-Słubice Special Economic Zone is geographically situated in the centre of Europe and in a direct vicinity of Germany and the Czech Republic. That provides very convenient transport links for both passengers and freight, which is guaranteed by the international roads E30 (A2), E65 (A3) and E28 as well as the Paris-Berlin-Warsaw-Moscow railway line. The location of the zone on the Oder and Warta rivers facilitates access to the seaports in Szczecin and Świnoujście and the inland ports in Berlin and Hamburg. Additionally, investors can take advantage of the passenger and cargo airports in Babimost, Goleniów or the German capital – Berlin. The Kostrzyn-Słubice Special Economic Zone will be operating till 31<sup>st</sup> December 2026.

K-S SEZ covers about 1715 ha. So far it has issued 247 business permits for operation in its area. The total value of capital expenditures incurred by all the companies acting there amounts to over 5 billion. The enterprises operating within K-S SEZ employ over 24 thousand people in total.

The zone has 31 subzones, 16 of which lie on the territory of the Lubuskie voivodeship: Kostrzyn nad Odrą, Nowa Sól, Bytom Odrzański, Słubice, Dobiegniew, Gorzów Wlkp, Gubin, Kargowa, Kożuchów, Sulęcín, Lubsko, Skwierzyzna, Drezdenko, Strzelce Krajeńskie, Krosno Odrzańskie, Zielona Góra.

Within K-S SEZ there are such companies as: ICT Poland Sp. z o.o. from Italy operating in the paper sector, Faurecia Gorzów Sp. z o.o. from Spain operating in the automotive sector, Funai Electric Sp. z o.o. from Japan operating in the electronics sector, AB Foods Polska Sp. Z o.o. from the UK operating in the food sector, Teleskop Sp. z o.o. from Belgium operating in the metal sector or Barlinek Inwestycje S.A. from Poland operating in the wood sector.

To be able to invest in the Kostrzyn-Słubice Special Economic Zone, an entrepreneur needs to obtain a business permit and incur capital expenditures in the minimum amount of EUR 100 thousand. The entrepreneur starting operation in K-S SEZ is entitled to take advantage of the regional support in the form of CIT exemption as a result of one of the two reasons: the incurred capital expenditures or creating new jobs.

Small companies starting their operation in the Kostrzyn-Słubice Special Economic Zone can benefit from a CIT exemption up of 70% of the incurred capital expenditures or 70% of the two-year labour cost. Medium-sized enterprises starting their operation can take advantage of a CIT exemption of 60% of the incurred capital expenditures or 60% of the two-year labour cost. And, big companies investing in the Kostrzyn-Słubice Special Economic Zone can benefit from a CIT exemption of 50% of the incurred capital expenditures or 50% of the two-year labour cost. The condition to receive aid due to creating new jobs is maintaining the jobs for at least a period of 5 years in case of big companies and 3 years in case of small and medium-sized ones.

More details: [http://www.kssse.pl/pl/oferta/zwolnienia\\_podatkowe.html](http://www.kssse.pl/pl/oferta/zwolnienia_podatkowe.html)

Kostrzyńsko-Słubicka Specjalna Strefa Ekonomiczna S.A.

ul. Orła Białego 22

66-470 Kostrzyn n. Odrą

Tel.: (+48 95) 721 98 00

Fax: (+48 95) 752 41 67

E-mail: [info@kssse.pl](mailto:info@kssse.pl)

[www.kssse.pl](http://www.kssse.pl)

The second zone operating in the Lubuskie voivodeship is the Wałbrzych Special Economic Zone “INVEST-PARK” Sp. z o.o.. It covers an area of 2648 ha, 1 thousand ha of which is still available for investors. The development area offered to investors wanting to start business operation is a greenfield area having a good transport network inside the subzone and with the biggest industrial centres in Poland and Europe. These areas have a well-developed technical infrastructure and an easy access to qualified staff, which allows investors to develop

their businesses dynamically. At present, about 200 investors are operating here. WSEZ consists of 44 subzones, twenty-eight of which are situated in the Lower Silesian Voivodeship, eight in the Greater Poland Voivodeship, seven in the Opolskie Voivodeship and one in the Lubuskie Voivodeship, in Szprotawa.

Szprotawa commune is situated in the south-western part of Poland. It has good location conditions – the distance to the German border is 60 km, and to the Czech border 80 km. The national road no. 12 runs through the town. The subzone lies 30 km from the motorway A4, 80 km from the border crossing in Zgorzelec, 110 km from the border crossing in Jakuszyce and 150 km from the International Airport in Wrocław and the International Ławica Airport in Poznań. The Szprotawa subzone covers an area of 34.40 ha. It is partly undeveloped, which provides an opportunity to shape new development in this area. The subzone has 32.57 ha available for investment. Currently, there are two investors in this area. One of them is Marmorin B&J sp. z o.o. dealing with the manufacture of sanitary articles.

Entrepreneurs investing in the Wałbrzych Special Economic Zone “INVEST-PARK” can benefit from the state aid resulting from the new investment or creating new jobs, in the form of income tax abatement.

The tax abatement level in WSEZ "INVEST-PARK":

[http://www.invest-park.com.pl/download/pl/ABCpl\\_Strona\\_5%20%282%29.jpg](http://www.invest-park.com.pl/download/pl/ABCpl_Strona_5%20%282%29.jpg)

An investor can take advantage of the state aid offered by the commune in the form of property tax exemption for entrepreneurs creating new jobs connected with the new investment. The basis for receiving the state aid in the form of income tax exemption is the permit for running business in the zone issued by WSEZ.

How to obtain the business permit: [http://www.investpark.com.pl/download/pl/loga/ABCpl\\_Strona\\_7.jpg](http://www.investpark.com.pl/download/pl/loga/ABCpl_Strona_7.jpg)

The investment area offer: [http://www.investpark.com.pl/Tereny\\_inwestycyjne\\_w\\_Polsce\\_-\\_Oferta](http://www.investpark.com.pl/Tereny_inwestycyjne_w_Polsce_-_Oferta)

The company managing the zone offers each new entrepreneur wanting to invest in WSEZ a short and clear procedure of purchasing land as well as support on each stage of the investment implementation and in their current operation. The WSEZ offer also includes such industrial properties as: office spaces to lease, production halls for small and medium-sized enterprises and conference halls.

Official web page: <http://www.invest-park.com.pl/start>

In the Lubuskie voivodeship, the Lubuski Industrial and Technological Park is operating. This organizational unit consists of two complexes: the Scientific and Technological Park of the University of Zielona Góra and the Industrial Park having a status of a special economic zone. LITP is situated in the middle of the Lubuskie Tricity, in Nowy Kisielin. Its main idea is a transfer of research, new technologies and innovations from science to economy. The project's aim is to: create a bridge between science and industry, develop the R&D infrastructure and support innovations and widely understood entrepreneurship.

The area of the Industrial Park is designed for production investments, warehouses and depots and service buildings. Its location is especially attractive due to its proximity to the border and good transport prospects ensuring the modernization and development of main and national roads and railways running east-west and north-south and a well-developed transport network inside the region

The Park includes the Sustainable Building Centre, whose main task is a transfer of sustainable building expertise and systems increasing energy efficiency. The unit's aim is to raise the social awareness, demonstrate benefits of disseminating sustainable building solutions, using renewable energy sources and implementing solutions increasing energy efficiency. The park also includes the Technology for Human Health Innovation Centre, which gives unique opportunities for creating innovative products and technologies from the field of bioengineering. Another unit included in the Lubuski Industrial and Technological Park is the Information

Technology Centre carrying out projects with the participation of representatives of industry, universities and local governments. The Centre creates new technologies or improves the existing ones, carrying out technological works or tests on installations based on the apparatus and specialist equipment of STP UZ. The Park also includes the STP Logistics Centre and the Platform for Science and Economy. The unit takes advantage of the industrial potential of the region and stimulates industry development, especially in the areas of advanced technologies. It encourages the start and development of advanced technology enterprises.

The Lubuski Industrial and Technological Park is a place of a supraregional nature, where science naturally cooperates with modern industries, including mainly small and medium-sized enterprises, but also big industry leaders. It is to be the basis for development of the companies from the Lubuski region and cooperation between Polish enterprises and the ones from the cooperating German lands.

The Park is covered by the K-S SEZ status so it offers the same tax exemptions as are binding in the zone. More details on the web page <http://lppt.pl/oferta/zwolnienia-podatkowe/>

Lubuski Park Przemysłowo-Technologiczny Sp. z o.o.  
ul. Stary Rynek 1  
65-001 Zielona Góra  
www: [www.lppt.pl](http://www.lppt.pl)  
e-mail: [info@lppt.pl](mailto:info@lppt.pl)  
tel.: 601 554 897

Additionally, every entrepreneur interested in investment on the territory of the Lubuskie voivodeship can use the investment area Internet map available on the web page: <http://mapa.coi-lubuskie.pl/>

It is also possible to receive preferential loans. The loans can be granted to micro-enterprises and small enterprises and medium-sized ones that are registered in the Lubuskie voivodeship. The loans are granted by:

Agencja Rozwoju Regionalnego S.A. (Regional Development Agency) – Lubuski Loan Fund

Zielona Góra, ul. Chopina 14, tel. 68 329 78 29-34

Gorzów Wlkp., ul. Kazimierza Wielkiego 1, tel. 95 739 03 16

[f.pozyczkowy@region.zgora.pl](mailto:f.pozyczkowy@region.zgora.pl), [www.lfp.region.zgora.pl](http://www.lfp.region.zgora.pl)

Entrepreneurship Foundation in Żary

ul. Mieszka I 13, 68-200 Żary tel. 68 4791600 - 04

[fp@fundacja.zary.pl](mailto:fp@fundacja.zary.pl), [www.fundacja.zary.pl](http://www.fundacja.zary.pl)

Lubuski Fundusz Poręczeń Kredytowych Sp. z o.o. (Lubuski Credit Guarantee Fund)

ul. Kupiecka 32 B, 65-058 Zielona Góra, tel. 68 323 96 00,

[lfpk@lfpk.pl](mailto:lfpk@lfpk.pl), [lfpk.pl](http://lfpk.pl)

Small Business Support Association in Dobiegniew

ul. Mickiewicza 7, 66-520 Dobiegniew, tel. 95 76 39 478,

[biuro@swmpdobiegniew.pl](mailto:biuro@swmpdobiegniew.pl), [www.swmpdobiegniew.pl](http://www.swmpdobiegniew.pl)

Voivodeship Vocational Training Centre in Gorzów Wlkp.

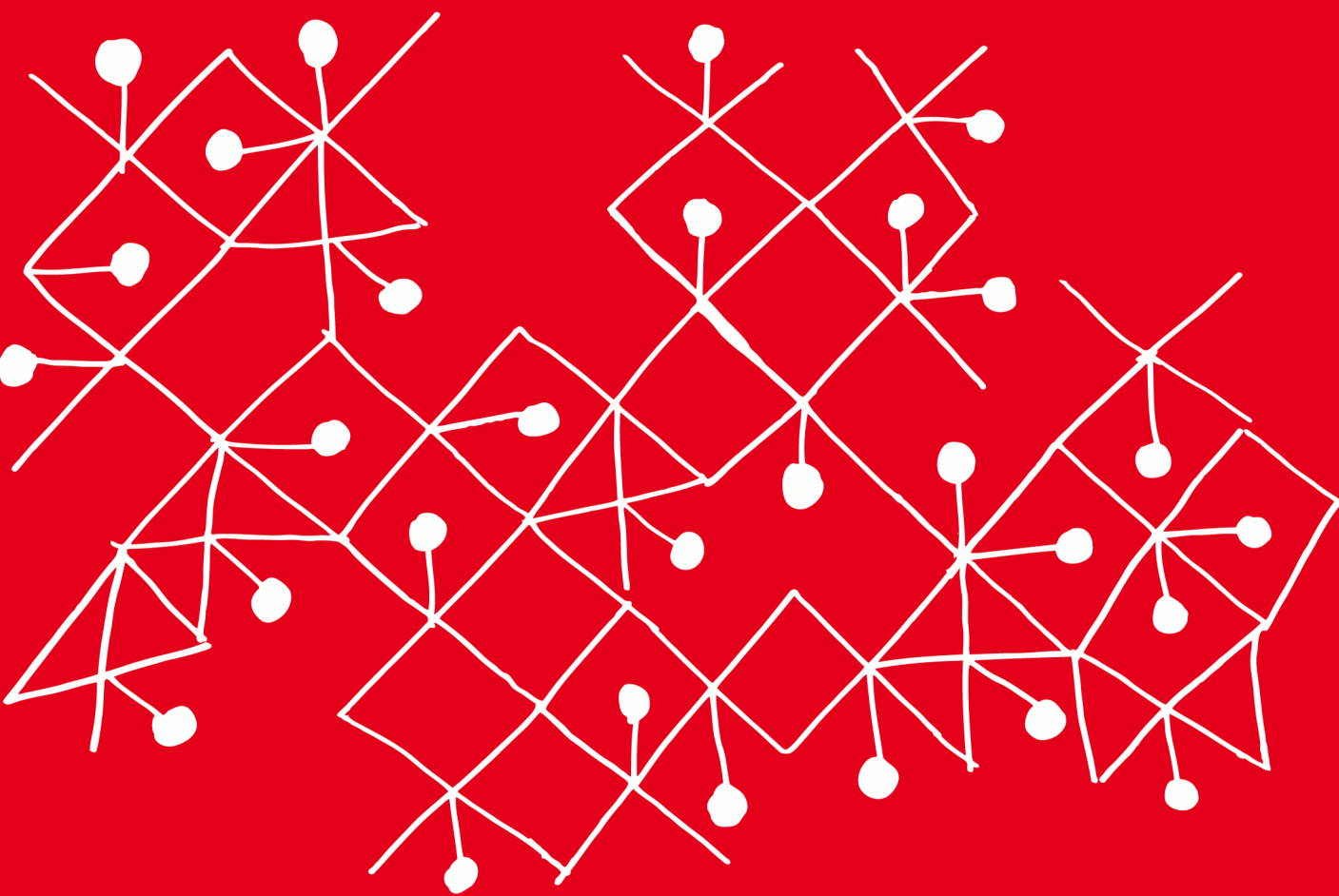
ul. Sikorskiego 95, 66-400 Gorzów Wlkp., tel. 95 720 73 25,

[zdz@zdz.gorzow.pl](mailto:zdz@zdz.gorzow.pl), [www.zdz.gorzow.pl](http://www.zdz.gorzow.pl)

ECDF Sp. z o.o.

ul. Promienista 83, 60-141 Poznań, tel. 61 835 00 98,

[ecdf@ecdf.pl](mailto:ecdf@ecdf.pl), [www.ecdf.pl](http://www.ecdf.pl)



**INNOWACYJNA GOSPODARKA**  
NARODOWA STRATEGIA SPÓJNOŚCI



**MINISTERSTWO  
ROZWOJU**

**UNIA EUROPEJSKA**  
EUROPEJSKI FUNDUSZ  
ROZWOJU REGIONALNEGO



Projekt jest współfinansowany przez Unię Europejską ze środków Europejskiego Funduszu Rozwoju Regionalnego